

Control on importation of electrical appliances and accessories

Consumer Protection (Safety Requirements) Regulations 2017

Presented by:

MRA Customs



Partners in Progress and Prosperity

1st March 2017

To help economic operators to comply and clear electrical appliances and accessories in relation with Consumer Protection (Safety Requirements) Regulations 2017.

AGENDA

- 1. To identify the Regulations relating to import**
- 2. To take cognizance of the procedures for import**
- 3. To take cognizance of the controlled goods and their respective HS CODES**
- 4. In case of non-compliance, the way forward.**

Section 2:

“enforcement authority” means

The Ministry of Trade and Shipping

Regulation 2

“certificate of conformity” means an original or a certified copy of a document from a **conformity assessment body** certifying that the goods comply with [safety standards](#);

“conformity assessment body”-

- (a) means a body which performs conformity assessments services and is recognised as such under the laws of the exporting country; and
- (b) includes the MSB;

Regulation 3

Regulation 3: These Regulations shall not apply to –

- (a) household and personal effects of a passenger;
- (b) goods entering the freeport zone; and
- (c) goods shipped on or before 30 September 2017.

Regulation 5

- (1) Subject to paragraph (2), no person shall import goods unless they are covered by a certificate of conformity **duly certified by MSB.**

- (2) (a) Where the goods are, at the time of importation, not covered by a certificate of conformity, a **test report** shall be obtained from MSB prior to the release of the goods.
(b) The importer shall, for the obtention of a test report, pay such non-refundable fee as MSB may determine.

Regulation 5

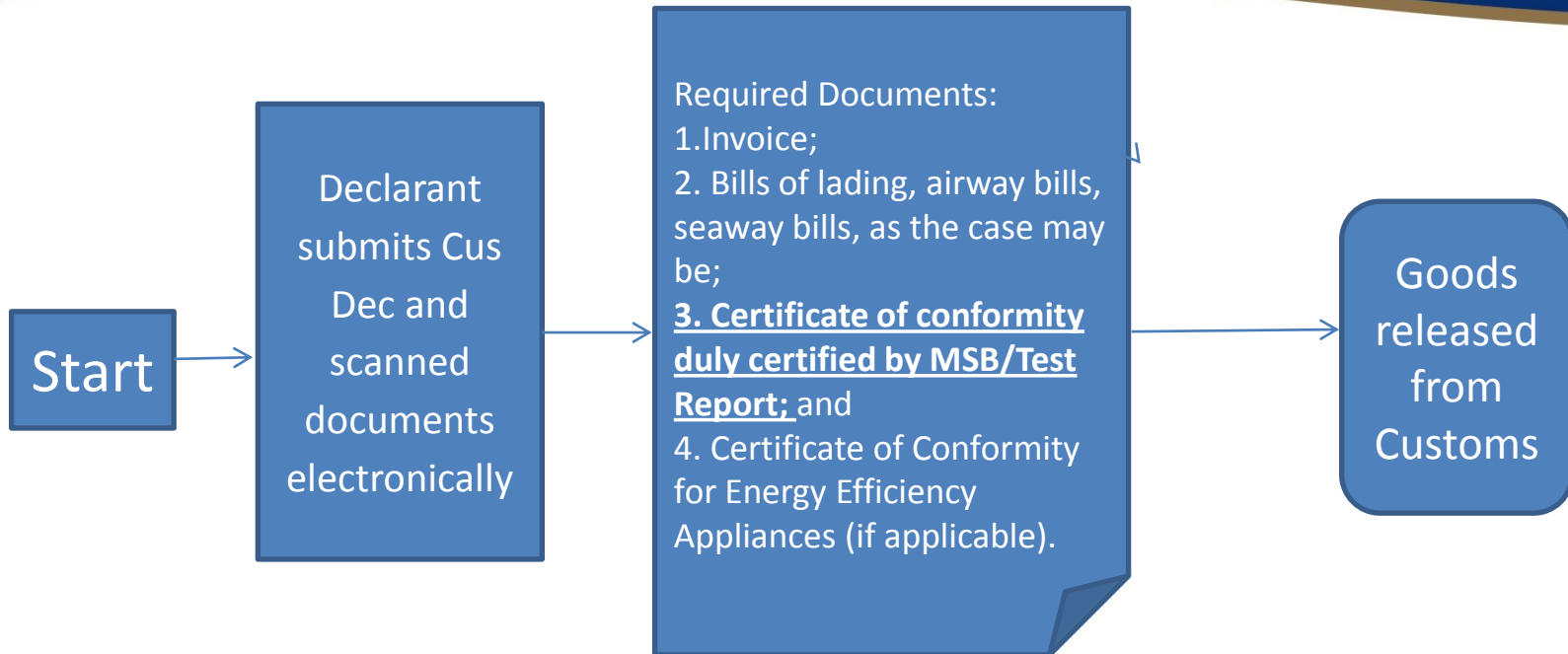
(3) Notwithstanding paragraphs (1) and (2), the Permanent Secretary may authorise an importer to clear the goods from Customs if the whole consignment is kept sealed under the custody of the enforcement authority until MSB issues a letter of recommendation to the importer in respect of those goods.

(4) (a) Where the goods do not comply with safety standards, the enforcement authority **may**, after consultation with the importer, cause the goods to be **exported, destroyed or disposed** of in such manner as to render them commercially valueless.

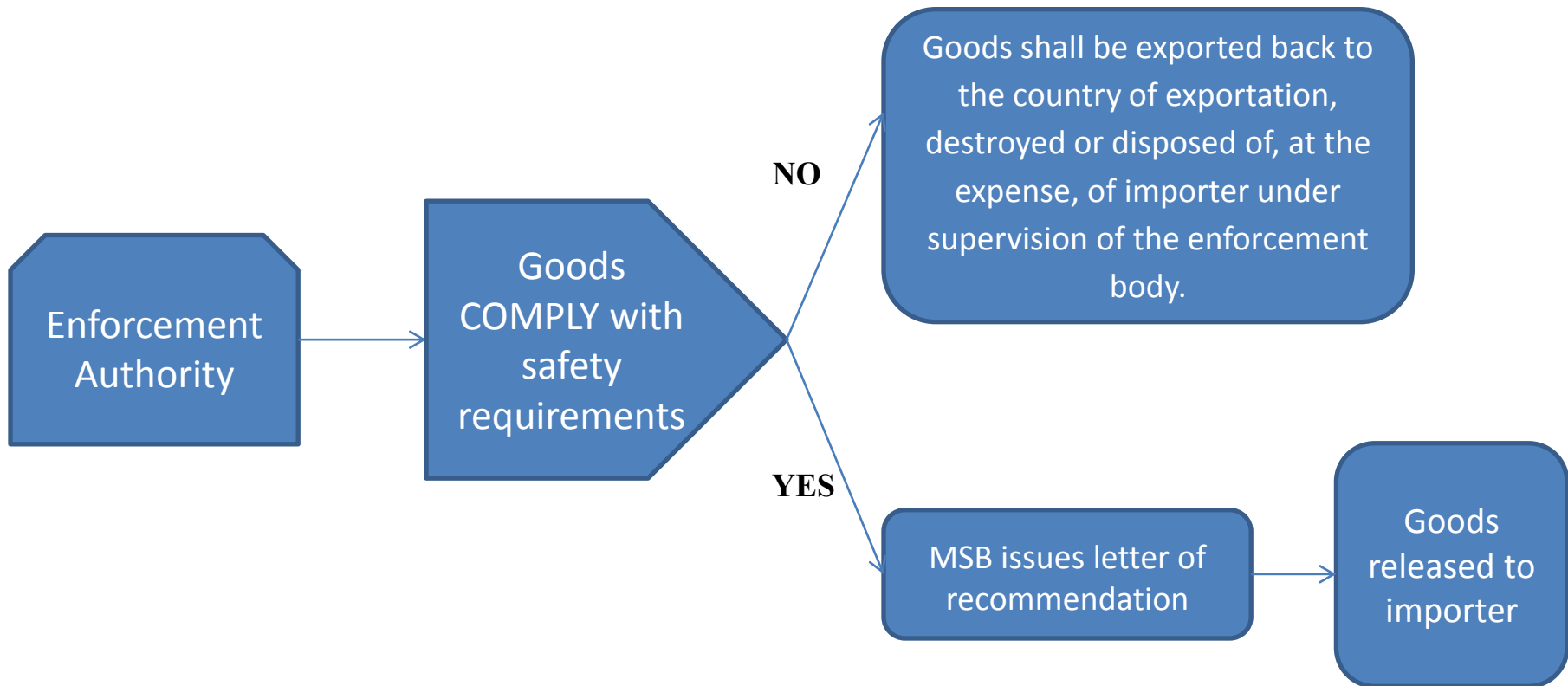
Regulation 5

(4) (b) The goods referred to in subparagraph (a) shall be exported back **to the country from which they were imported**, or destroyed or disposed of, **at the expense of the importer**, under the supervision of the enforcement authority.

Release of electronic appliances -Customs



Treatment of electronic appliances -Enforcement Authority



HS Codes for safety standards

SCHEDULE
[Regulation 2 and 4]

SCHEDULE

[Regulations 2 and 4]

GOODS AND APPLICABLE SAFETY STANDARDS

PART I - DOMESTIC OR HOUSEHOLD APPLIANCES AND SIMILAR ELECTRICAL APPLIANCES

Description of goods	Headings/ HS codes	Safety standards
Hair dryers	8516.31	MS IEC 60335-2-23 Household and similar electrical appliances - safety Part 2-23 - particular requirements for appliances for skin or hair care
Table fan, pedestal fan, wall fan, ceiling fan	8414.51	MS IEC 60335-2-80 Household and similar electrical appliances - safety Part 2-80 - particular requirements for fans
Ovens (fixed)	8516.6011 8516.6012 8516.6013	MS IEC 60335-2-6 Household and similar electrical appliances - safety Part 2-6 - particular requirements for stationary cooking ranges, hobs, ovens and similar, appliances
Microwave oven	8516.50	MS IEC 60335-2-25 Household and similar electrical appliances - safety . Part 2-25 - particular requirements for microwave ovens, including combination microwave ovens

PART I - DOMESTIC OR HOUSEHOLD APPLIANCES AND SIMILAR ELECTRICAL APPLIANCES

Description of goods	Headings/HS codes	Safety standards
Coffee or tea maker	8516.71	MS IEC 60335-2-15 Household and similar electrical appliances - safety Part 2-15 ~ particular requirements for appliances for heating liquids
Toaster	8516.72	MS IEC 60335-2-9 Household and similar electrical appliances - safety Part 2-9 ~ particular requirements for grills, toasters and similar portable cooking appliances
Vacuum cleaner	8508.11 8508.19 8508.60	MS IEC 60335-2-2 Household and similar electrical appliances - safety Part 2-2 ~ particular requirements for vacuum cleaners and water-suction cleaning appliances
Dish washing machine	8422.111 8422.119	MS IEC 60335-2-5 Household and similar electrical appliances - safety Part 2-5 ~ particular requirements for dishwashers
Clothes washing machine	8450.11 8450.12 8450.19 8450.20	MS IEC 60335-2-7 Household and similar electrical appliances - safety Part 2-7 ~ particular requirements for washing machine

PART I - DOMESTIC OR HOUSEHOLD APPLIANCES AND SIMILAR ELECTRICAL APPLIANCES

Description of goods	Headings/HS codes	Safety standards
Spin extractor (centrifugal clothes dryer)	8421.121 8421.129	IEC 60335-2-4 Household and similar electrical appliances - safety Part 2-4 - particular requirements for spin extractors
Electric shavers, hair clippers	8510.10 8510.20	IEC 60335-2-8 Household and similar electrical appliances - safety Part 2-8 - particular requirements for shavers, hair clippers and similar Appliances
Electrically heated blankets	6301.10	IEC 60335-2-17 Household and similar electrical appliances - safety Part 2-17 - particular requirements for blankets, pads, clothing and similar flexible heating appliances
Electrically heated blankets	6301.10	IEC 60335-2-17 Household and similar electrical appliances - safety Part 2-17 - particular requirements for blankets, pads, clothing and similar flexible heating appliances
Whirlpool baths	9019.1040	IEC 60335-2-60 Household and similar electrical appliances - safety Part 2-60 - particular requirements for whirlpool baths and whirlpool spas
Television	8528.7291 8528.7299 8528.739	MS IEC 60065 Audio, video and similar electronic apparatus – safety requirements

Description of goods	Headings/HS codes	Safety standards
Table lamp and floor standing lamp	9405.201 9405.203 9405.209	MS IEC 60598-2-4 Luminaires Part 2 - particular requirements Section 4 - portable general purpose Luminaires
Lighting chains using incandescent lamps for use in Christmas tree or other decorative use	9405.301 9405.309	MS IEC 60598-2-20 Luminaires Part 2-20 - particular requirements Lighting chains
Electronic ballast for fluorescent lamp	8504.10	MS IEC 61347-2-3 Lamp control gear Part 2-3 - particular requirements for a.c. and/or d.c. supplied electronic control gear for fluorescent lamps
Magnetic ballast for fluorescent lamp	8504.10	MS IEC 61347-2-8 Lamp control gear Part 2-8 - particular requirements for ballasts for fluorescent lamps

Description of goods	Headings/H S codes	Safety standards
Isolating transformer for downlight fitting	8504.32	<p>MS IEC 61558-2-6</p> <p>Safety of transformers, reactors, power supply units and similar products for supply voltages up to 1,100 V</p> <p>Part 2-6 - particular requirements and tests for safety isolating transformers and power supply units incorporating safety isolating transformers</p> <p>IEC 61347-2-2</p> <p>Lamp control gear</p> <p>Part 2-2 - particular requirements for d.c. or a.c. supplied electronic stepdown converters for filament lamps</p> <p>MS IEC 61347-2-13</p> <p>Lamp control gear</p> <p>Part 2-3 - particular requirements for a.c. and/or d.c. supplied electronic control gear for LED modules</p>
Lamp holders	8536.61	<p>IEC 61184</p> <p>Bayonet lamp holders</p> <p>IEC60238</p> <p>Edison screw lamp holders</p>



Successful migration from **HS 2012** version to **HS 2017** version

1st January 2017

Changes required to the schedule

[Part I and Part II]

- Formatting of HS Code
- Deletion of HS Code
- Addition of HS Code

Changes to the schedule

➤ The format of the HS Codes will be modified to **8-digits** for **Part I** and **Part II**

e.g.,

Description of goods	Headings/HS codes	Safety standards
Hair dryers	8516.31. 00	MS IEC 60335-2-23 Household and similar electrical appliances - safety Part 2-23 - particular requirements for appliances for skin or hair care
Table fan, pedestal fan, wall fan, ceiling fan	8414.51. 00	MS IEC 60335-2-80 Household and similar electrical appliances - safety Part 2-80 - particular requirements for fans
Ovens (fixed)	8516.60.11 8516.60.12 8516.60.13	MS IEC 60335-2-6 Household and similar electrical appliances - safety Part 2-6 - particular requirements for stationary cooking ranges, hobs, ovens and similar, appliances

Changes to the schedule

➤ New HS Code will be included

Description of goods	Headings/HS codes	Safety standards
Table fan, pedestal fan, wall fan, ceiling fan	8414.51. 00	MS IEC 60335-2-80 Household and similar electrical appliances - safety Part 2-80 - particular requirements for fans

84.14 Air or vacuum pumps, air or other gas compressors and fans; ventilating

- Fans:

8414.51.00 -- Table, floor, wall, window, ceiling or roof fans, with a self-contained electric motor of an output not exceeding 125 W

8414.59.00 -- Other

Changes to the schedule

- HS Codes 8516.60.11, 8516.60.12 and 8516.60.13 will be deleted and replaced by **8516.60.10**

Description of goods	Headings/HS codes	Safety standards
Ovens (fixed)	8516.60.11 8516.60.12 8516.60.13	MS IEC 60335-2-6 Household and similar electrical appliances - safety Part 2-6 - particular requirements for stationary cooking ranges, hobs, ovens and similar, appliances

8516.60.10 ~~~ Other ovens using electricity or combined with gas as a source of energy, other than a portable oven of a mass of less than 18 kgs, of an Energy Efficiency Index_{cavity} of 159 or more (standard MS 204:2015)

Changes to the schedule

➤ HS Codes for **Clothes washing machine** will be deleted and replaced as shown below

Description of goods	Headings/HS codes	Safety standards
Clothes washing machine	8450.11 8450.12 8450.19 8450.20	MS IEC 60335-2-7 Household and similar electrical appliances - safety Part 2-7 - particular requirements for washing machine

*Replace
by*



HS Codes			
8450.11.11	8450.12.21	8450.19.30	8450.20.20
8450.11.19	8450.12.29	8450.19.90	
8450.11.21	8450.19.11	8450.20.11	
8450.11.29	8450.19.19	8450.20.12	
8450.12.11	8450.19.21	8450.20.13	
8450.12.19	8450.19.29	8450.20.19	



Partners in Progress and Prosperity

